

## C-Spine Clearance

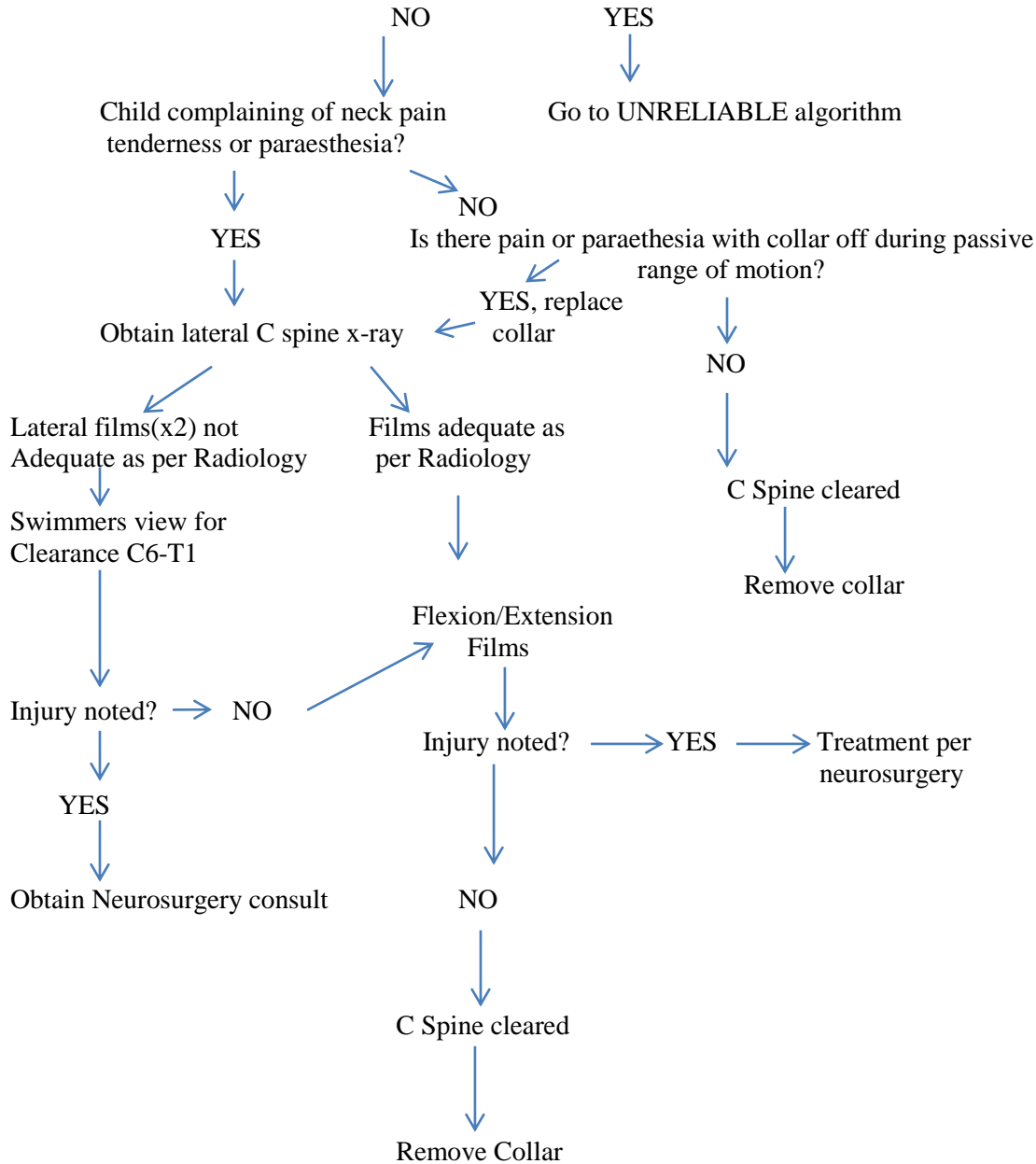
The following algorithms are used to guide the C-spine clearance of Pediatric Trauma patients:

### C-Spine Clearance- Reliable Patient

#### C Spine Clearance- Reliable

C-Collar to remain in place until diagnostic workup complete

1. Is there altered sensorium or other painful injury causing distraction?
2. Is there an inability to communicate or localize pain?



Revised 11/2013

C Spine Clearance-Unreliable Patient

**C Spine Clearance- Unreliable Patient**

C-Collar to remain in place until diagnostic workup complete

1. Is there altered sensorium or other painful injury causing distraction?
2. Is there an inability to communicate or localize pain?

