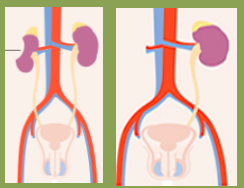


PTS/EAST Recommendations for Management of Stable Pediatric Blunt Renal Trauma

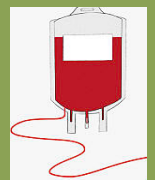
Non-operative vs Operative Management

Decreased Renal Loss



1.5% vs 44.9% *
Percent of Patients

Decreased Blood Transfusions



23.1% vs 90.0%*

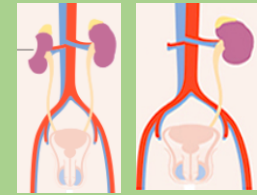
Decreased Development of Urinoma



1.2 vs 2.4%

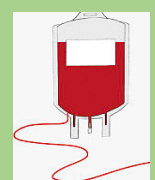
Angio-embolization vs Surgical Intervention

Decreased Renal Loss



0% vs 66.7%*
Percent of Patients

Decreased Blood Transfusions



83.3% vs 87.5%

Decreased Urine Leak/Infectious Complication



0% vs 33.3%

Should Blood Pressure Checks Be Performed at Follow Up to Diagnose Hypertension?

Up to 5% of Pediatric Patients Develop Trauma-Induced Hypertension



Recommendations:

- Non-operative Management
- Angio-embolization for Hemodynamically Stable, High Grade with Ongoing or Delayed Bleeding
- Blood Pressure Checks at Follow Up

* Statistically Significant

Hagedorn JC, et al. *J Trauma Acute Care Surg.* 2019.