

SBIRT Screening: What you need to know!

Lisa Nichols MBA, BSN, RN, CCRN-K
Trauma Program Manager
Wolfson Children's Hospital
Jacksonville, Florida



ACS Criteria 18-3

- **Universal screening for *alcohol* use must be performed for “all” injured patients and must be documented**
 - “All” clarified to be 80% of trauma patients who are admitted with a stay >24 hours
 - This includes ALL services
 - Any patient with altered mental status should be excluded
 - Does not define the age

ACS Criteria 18-4

- **Any patient with a positive screening must receive an intervention**
 - Those that are missed, must be tracked within your PIPS process
- **“Appropriately trained staff”**
 - Be able to discuss the process for how this staff was educated and/or credentialed
 - Example: CRAFFT 2.0 Manual

Examples of Screening Processes

1. ED nurses trained to screen all

- If positive, behavioral health provider notified by RN

2. Social work trained in screening

- If positive, behavioral health provider notified
- If LCSW, able to provide referral

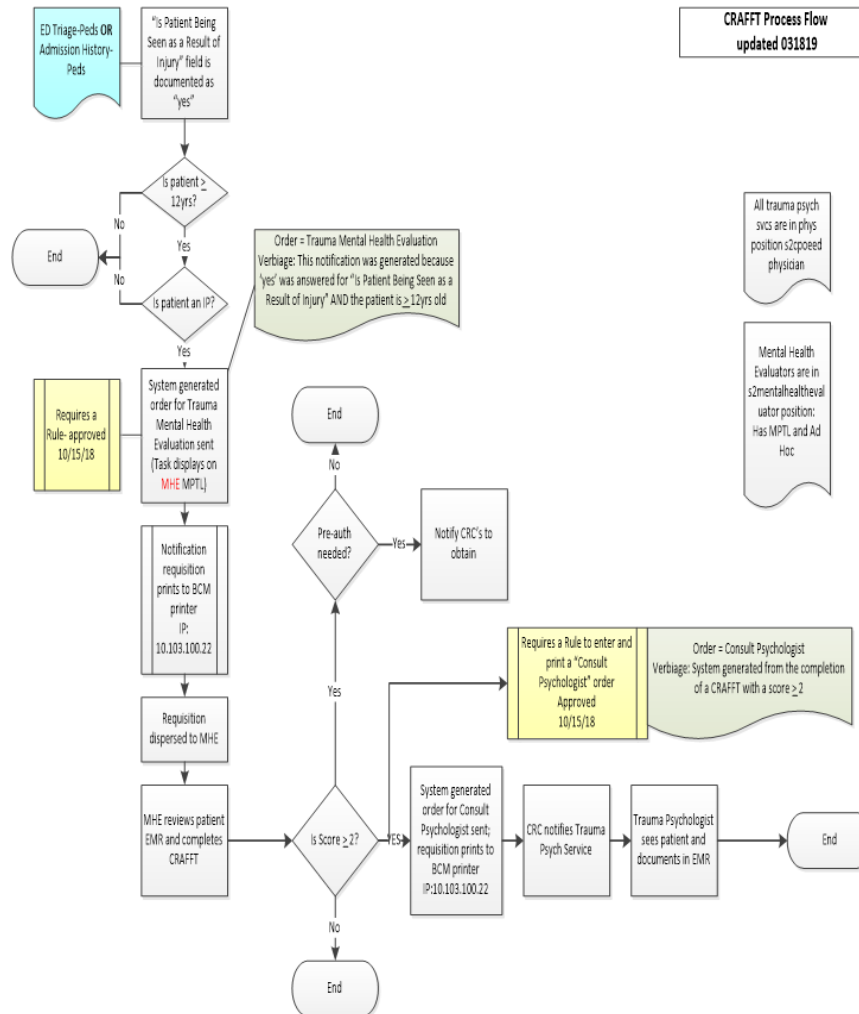
3. Trauma APP w/tertiary survey or SW (non-alerts)

- Activations ≥ 12 years of age automatically draw lab work (if + overrides screen)

4. Auto-trigger for Mental Health Evaluator (MHE) to complete initial screening

- If positive, automatic referral to behavioral health psychologist for referral based on score

Outline the Process!



Positive “Referral” Needed— Example: CRAFFT 2.0

Risk Level	CRAFFT Score	Clinical Action
LOW	No use in past 12 months and CRAFFT score of 0	Provide information about risks of substance use and substance use-related riding/driving; offer praise and encouragement
MEDIUM	No use in past 12 months and “Yes” to CAR question only OR Use in past 12 months and CRAFFT score < 2	Provide information about risks of substance use and substance use-related riding/driving; brief advice; possible follow-up visit
HIGH	Use in past 12 months and CRAFFT score ≥ 2	Provide information about risks of substance use and substance use-related riding/driving; brief advice; follow-up visit; possible referral to counseling/treatment

Areas for PI Opportunities— Why are screenings missed?

- Coverage for the weekends
- How/who to identify all patients who qualify
 - Orthopedics, Neurosurgery...
- Reliance on humans
- Reliance on technology
- COVID—parents unable to leave rooms
 - MHE/Behavioral Health working off site
- Legal implications
 - Treatment “programs”; HIPAA’s Privacy Rule
- THC legal in some states
- Limited value? Is it enough?